

Arenes Homework

Draw the structures of the following arenes.

benzene

toluene

pyridine

ethylbenzene

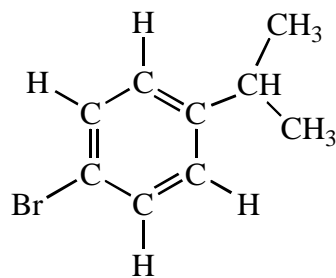
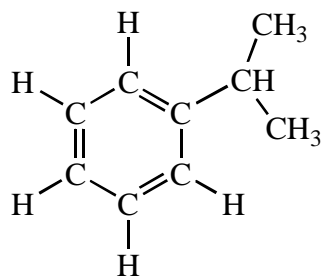
1-bromo-4-*t*-butylbenzene

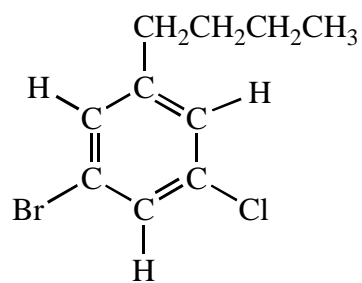
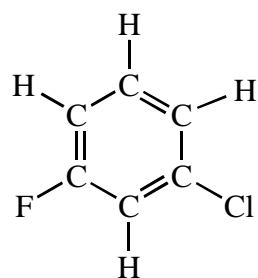
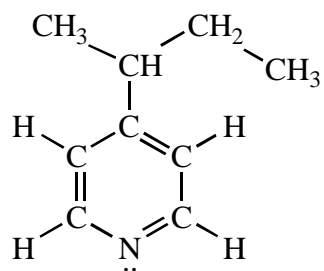
m-chlorophenol

2,4,6-trinitrotoluene (TNT)

3-bromoaniline

What is the correct systematic name (current, old, or both) for the following structures?





The names given for the following molecules are incorrect. Make them acceptable.